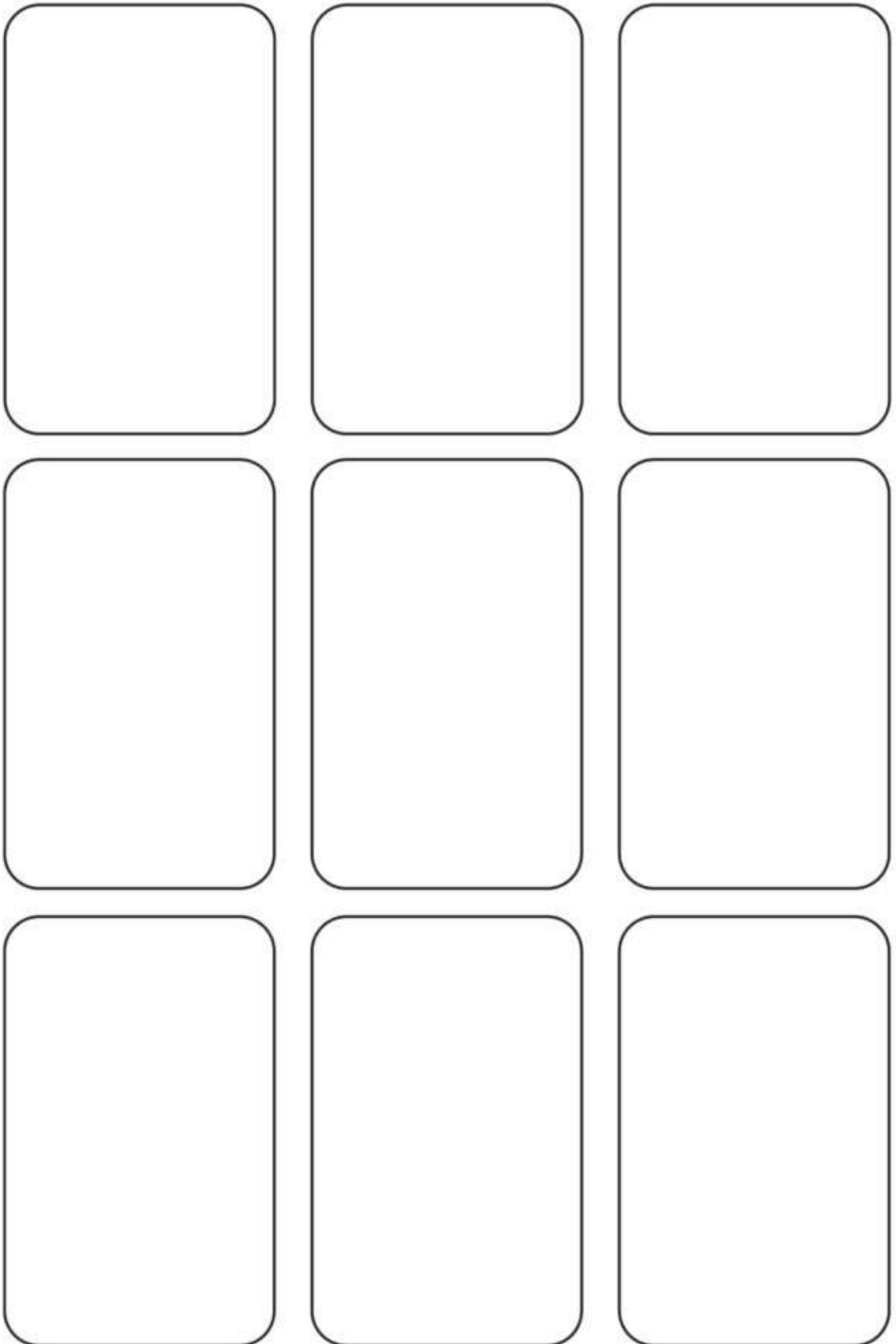
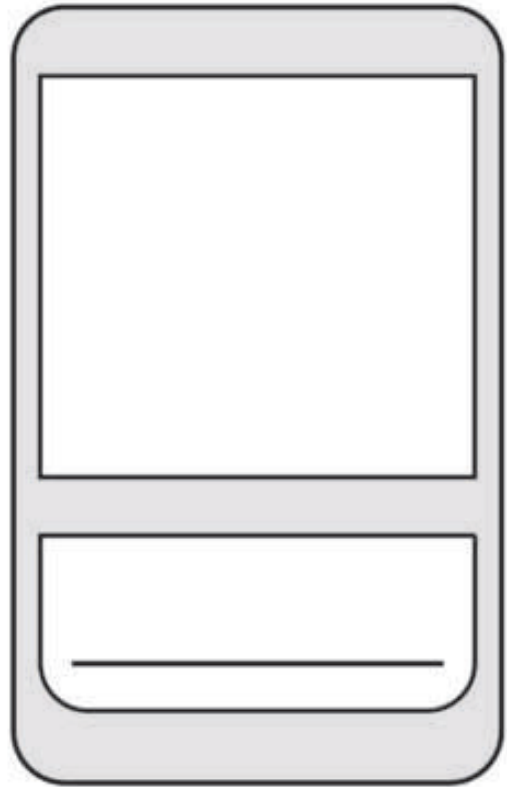
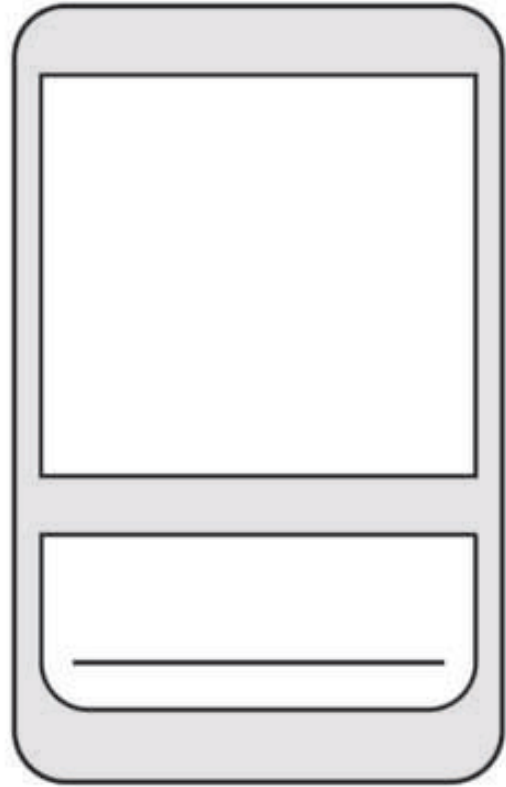


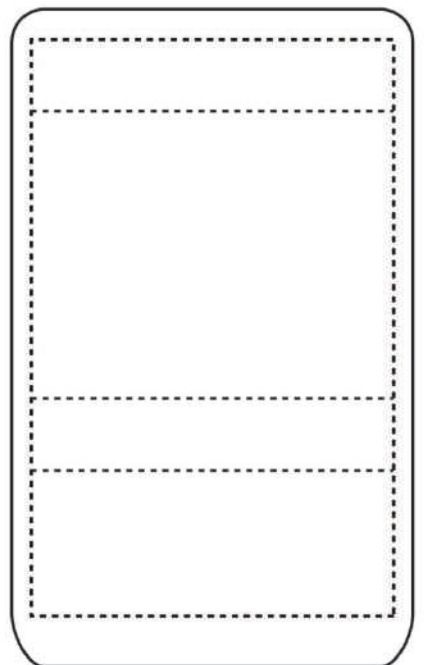
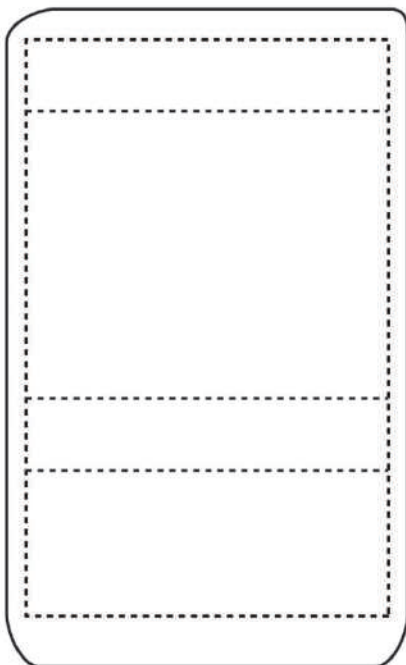
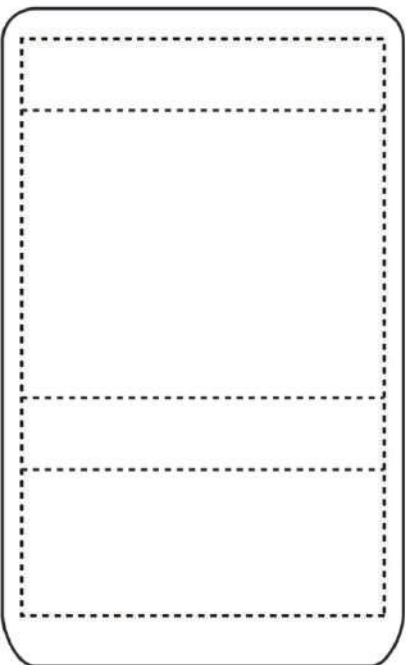
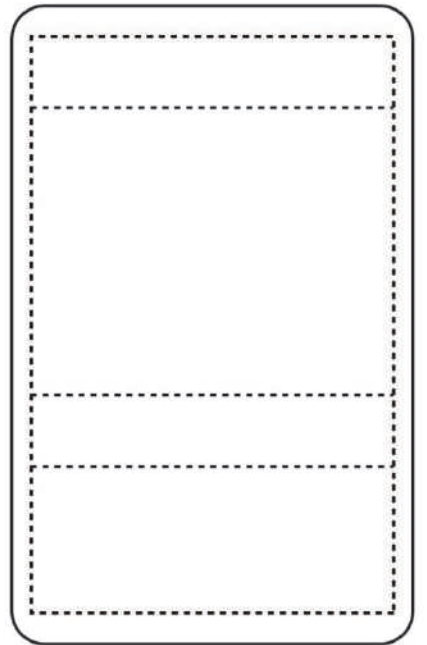
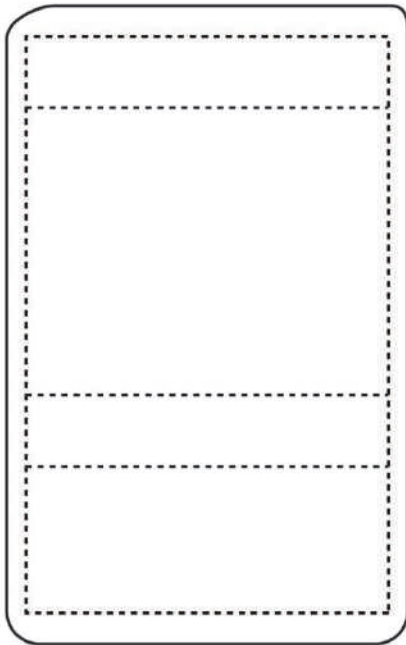
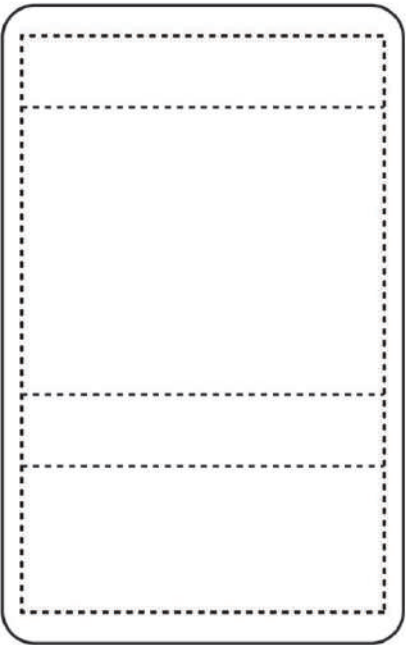
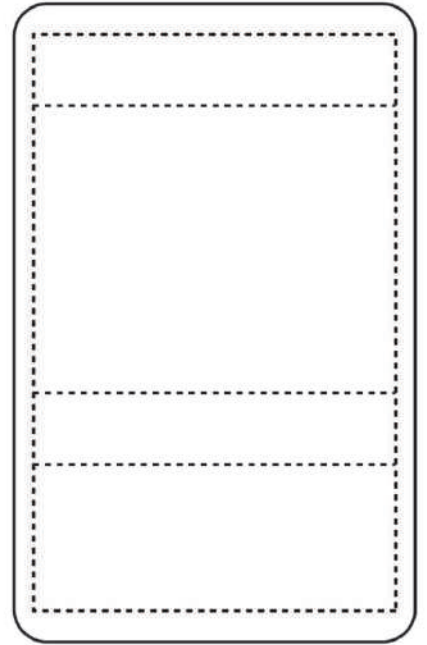
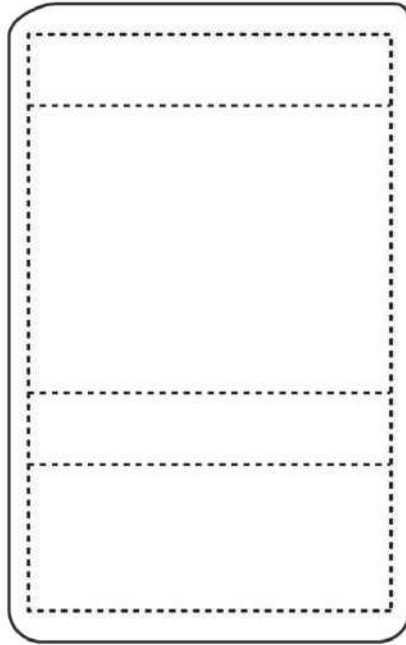
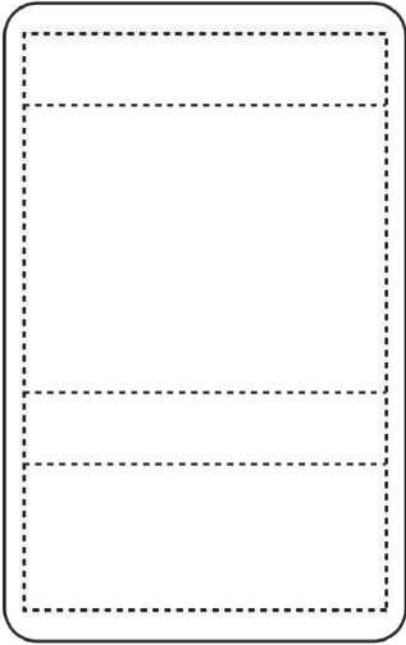
Trading Card Templates



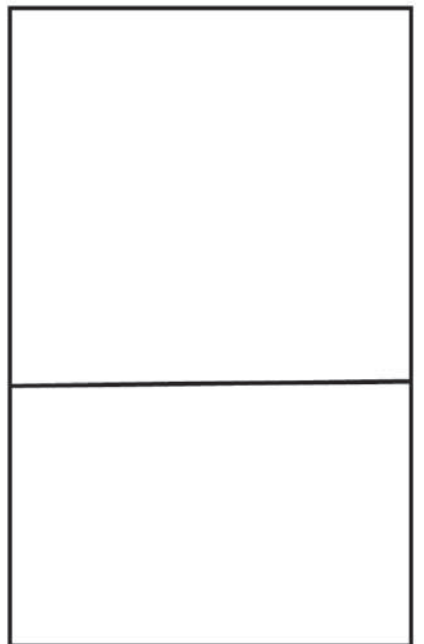
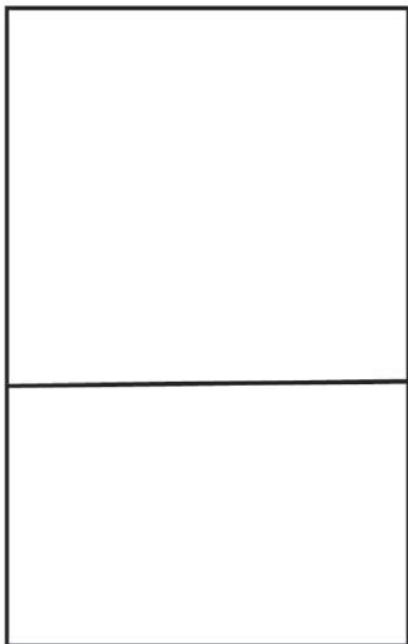
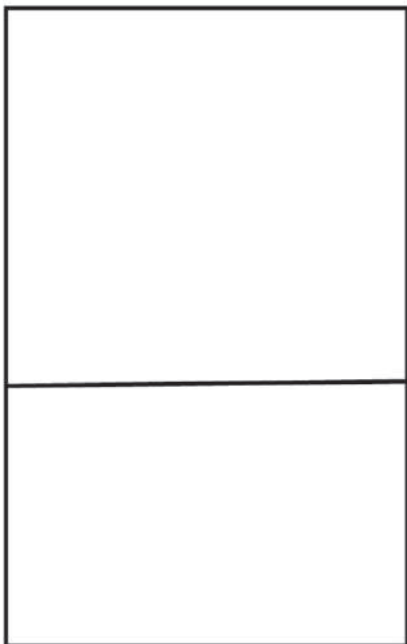
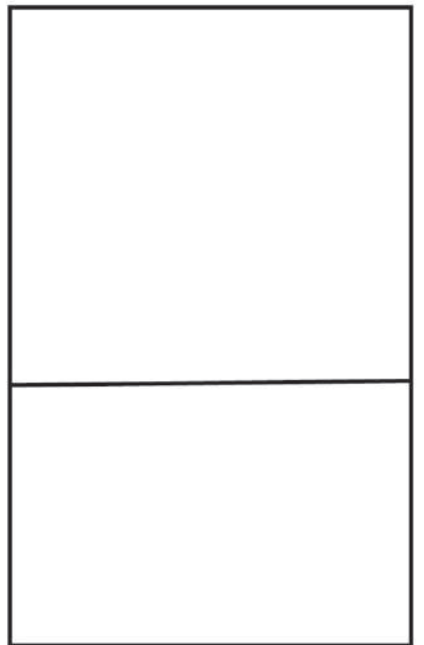
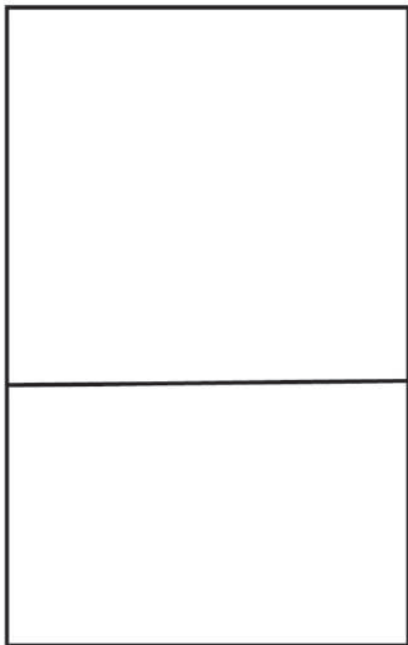
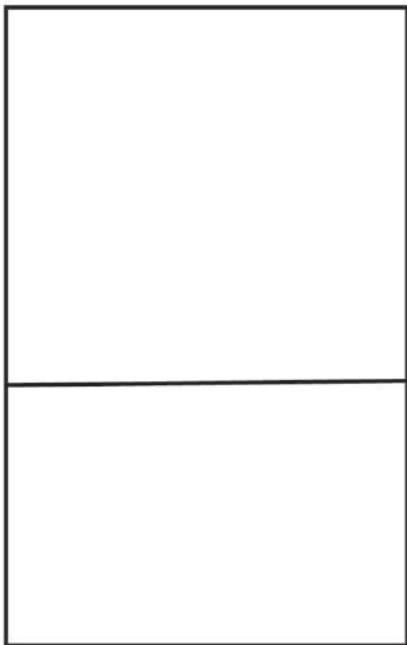
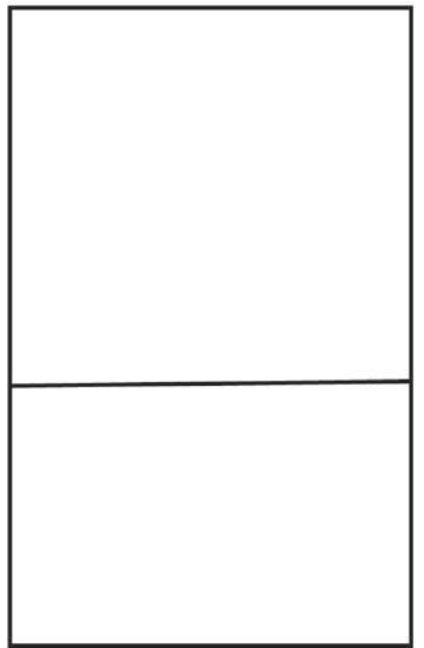
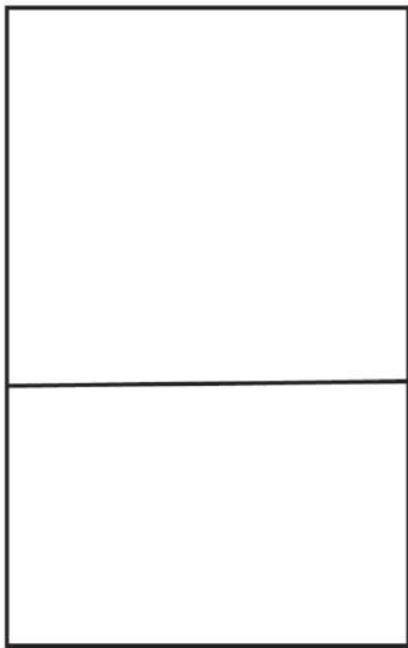
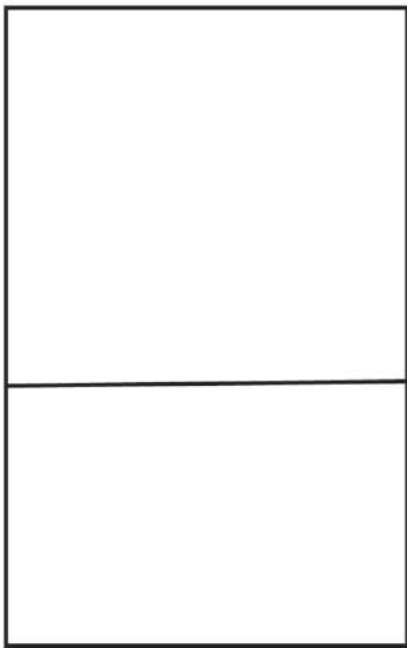
Trading Card Templates



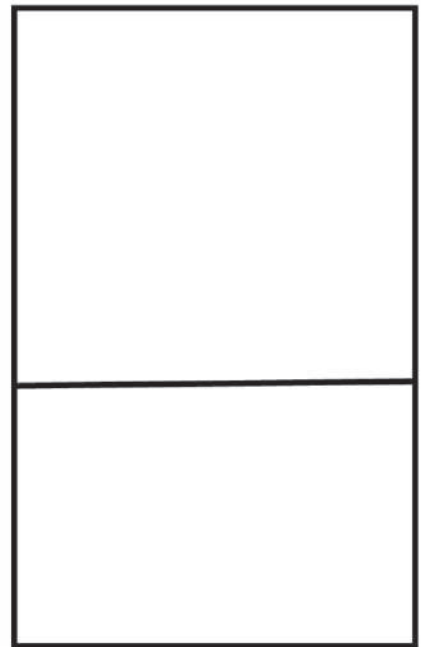
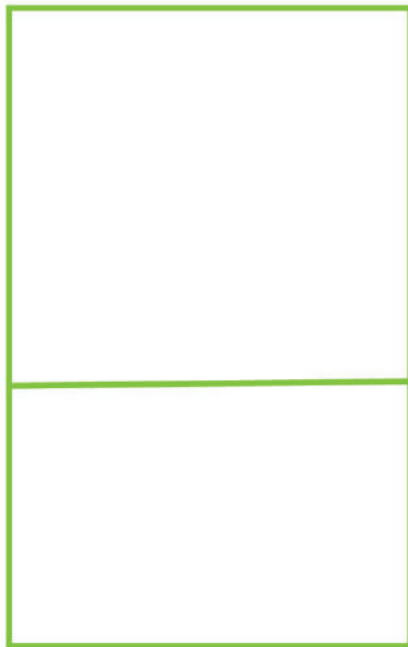
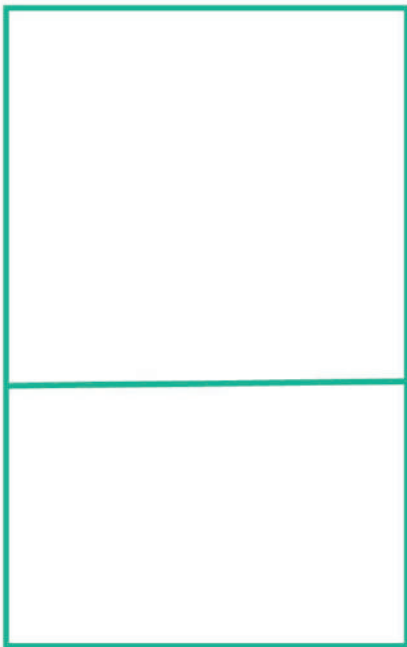
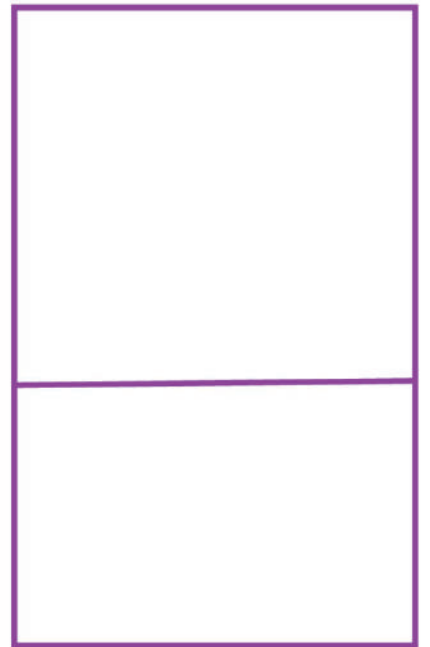
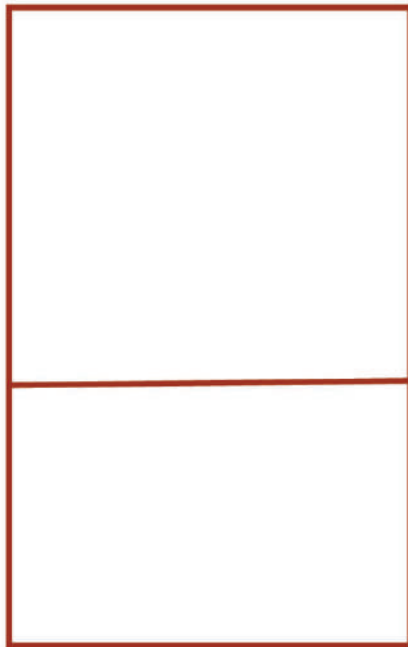
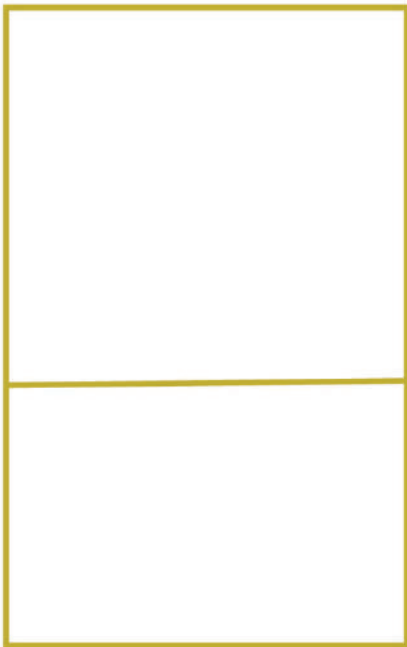
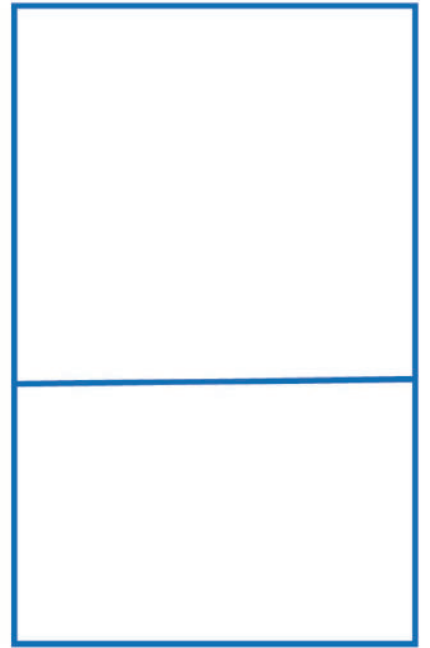
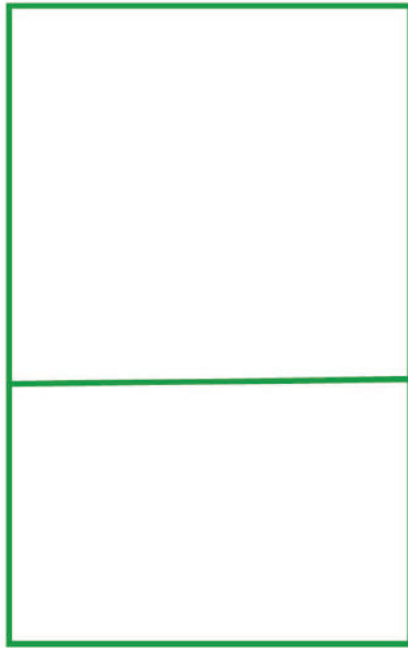
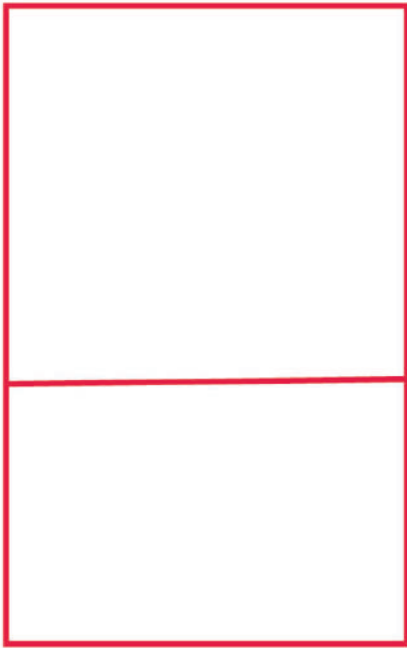
Trading Card Templates



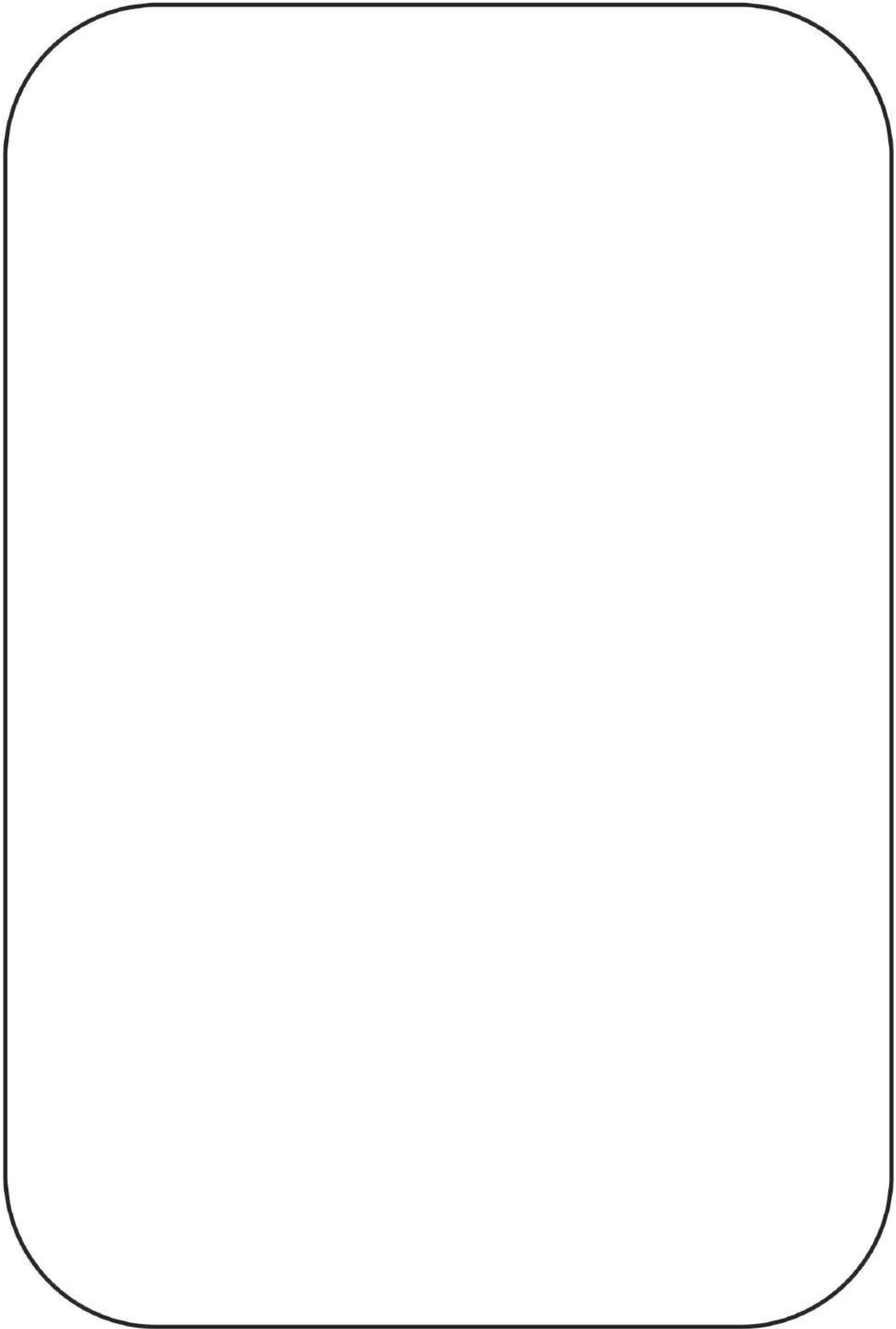
Trading Card Templates



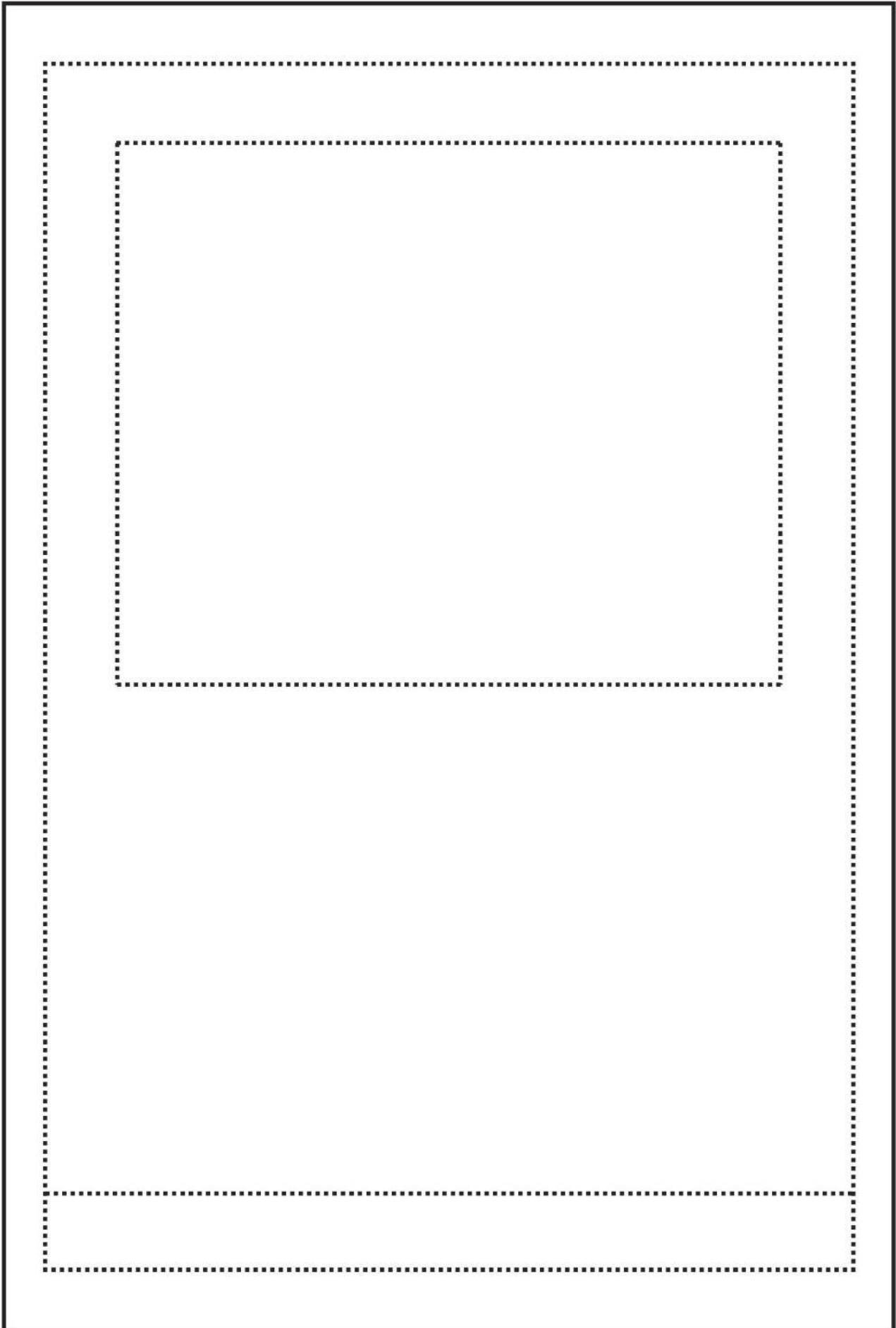
Trading Card Templates



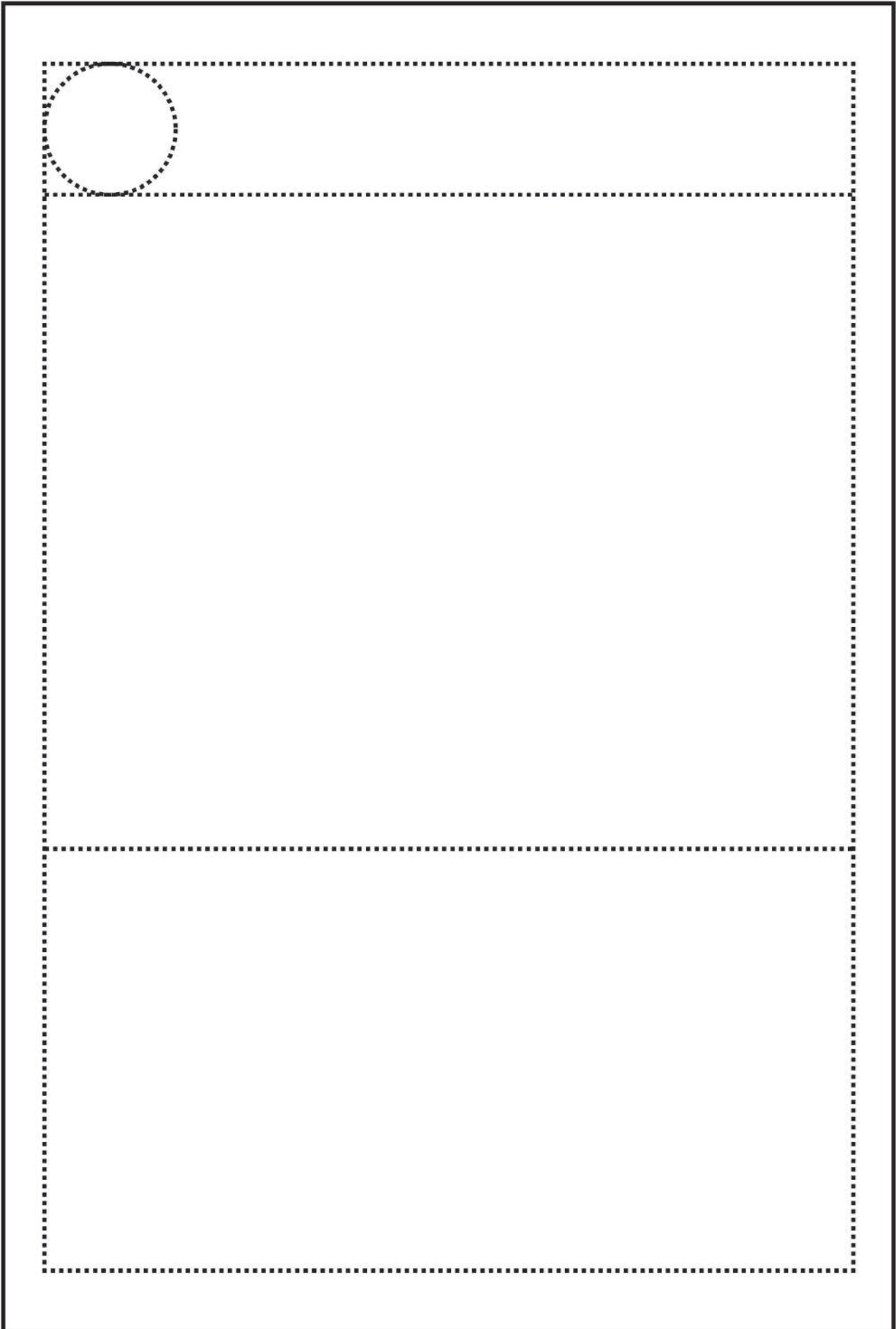
Trading Card Template



Trading Card Template



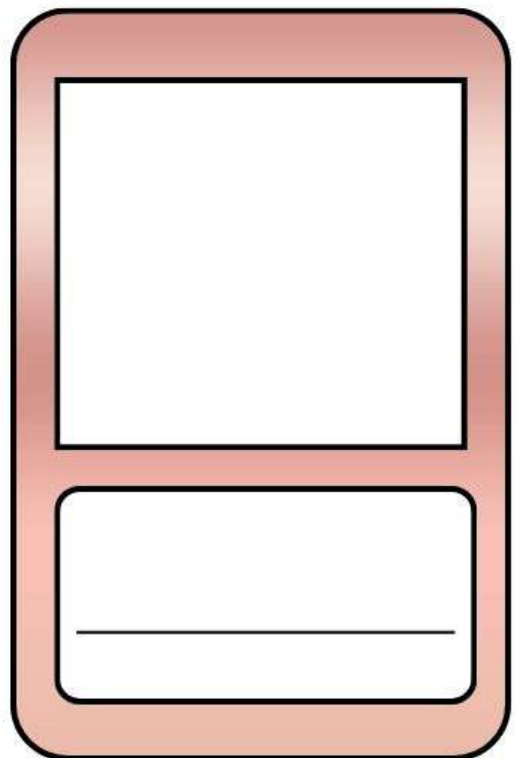
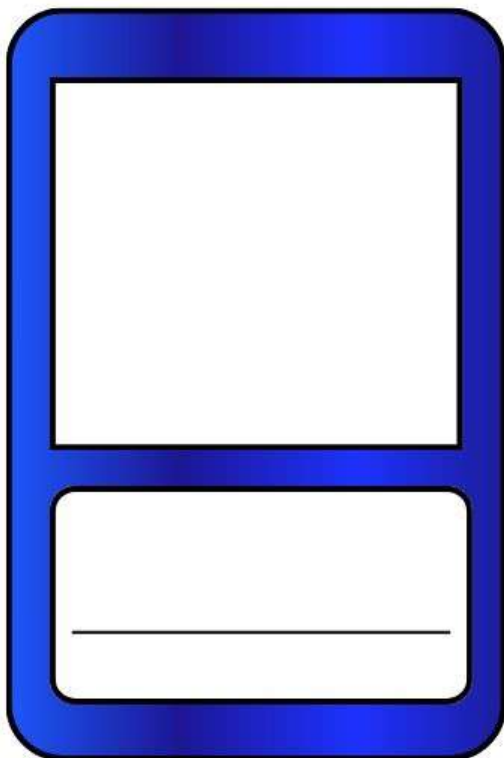
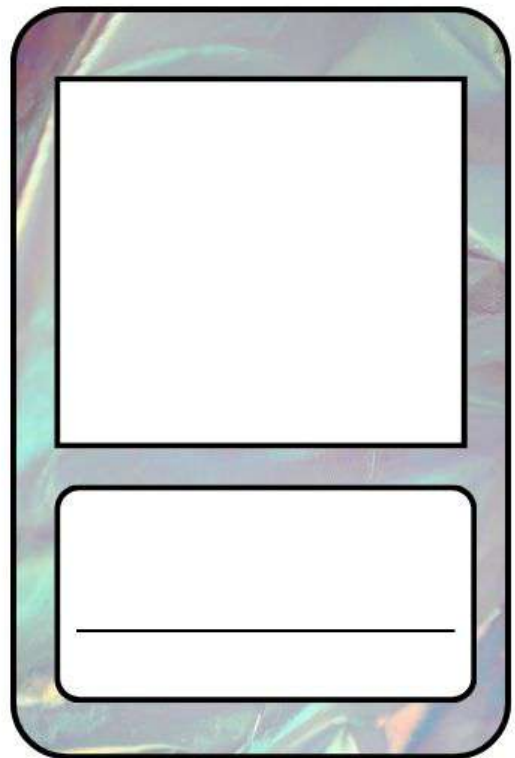
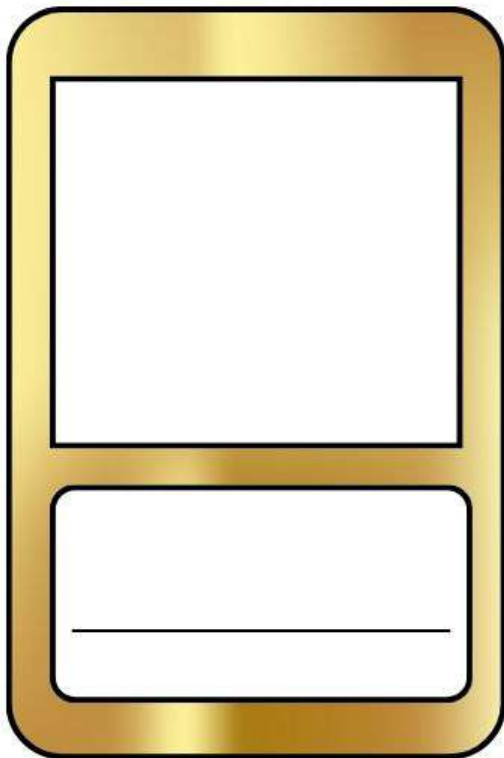
Trading Card Template



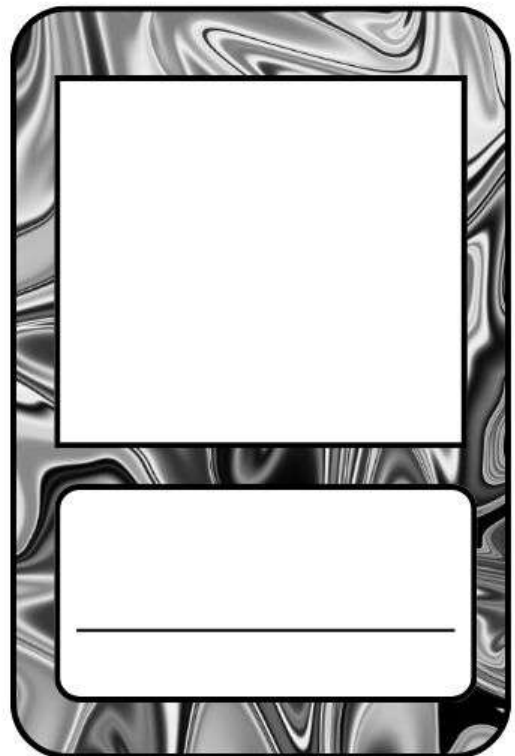
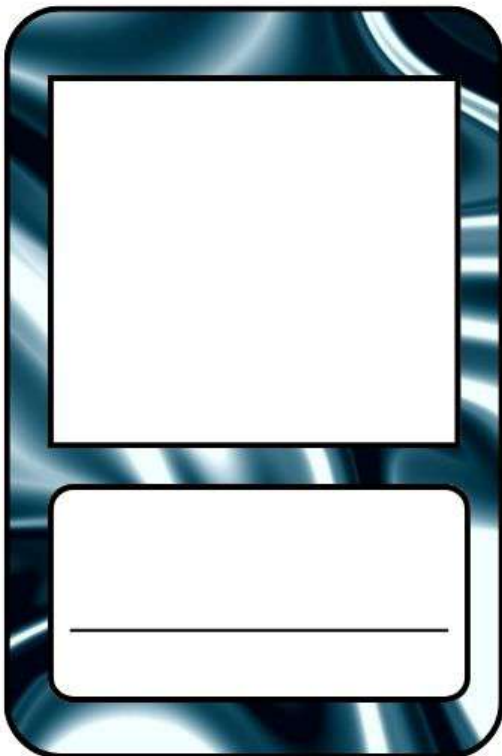
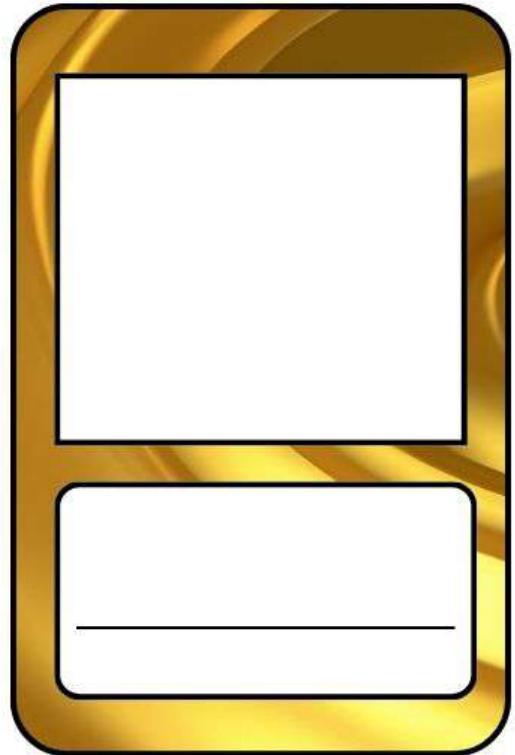
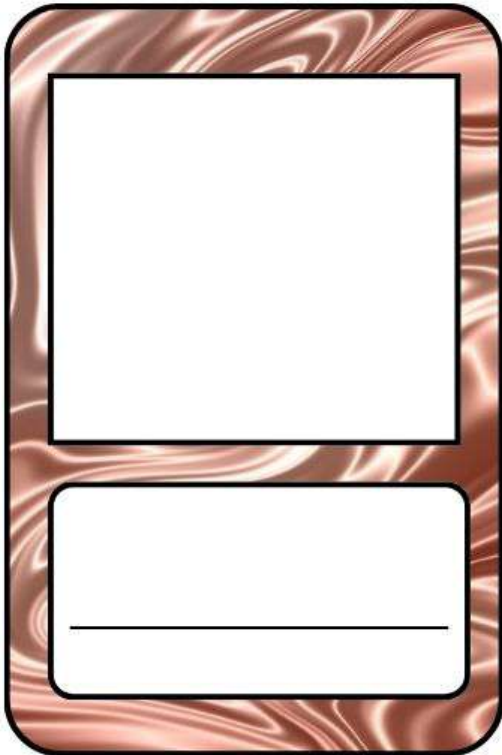
Trading Card Template

The image shows a large rectangular frame with a solid black border. Inside this frame, there is a dashed black border that defines the area for the trading card. The dashed border is positioned approximately 10% from the top and bottom edges and 5% from the left and right edges of the solid border. This layout is typical for a trading card template where the dashed line indicates the size of the card to be placed within the larger frame.

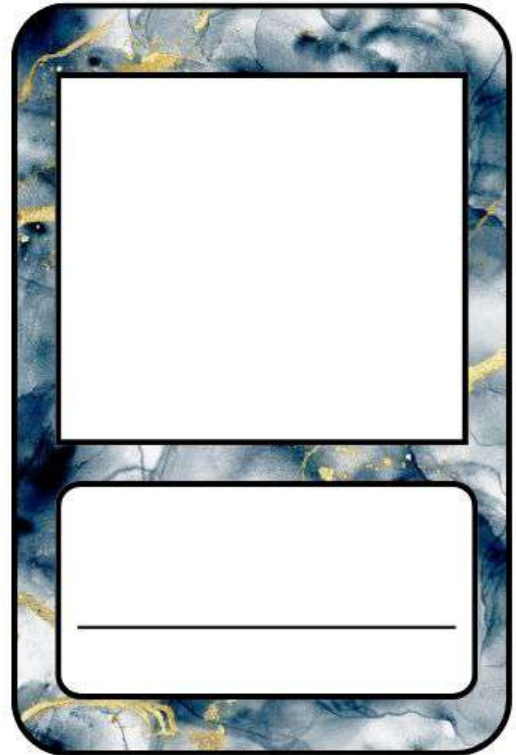
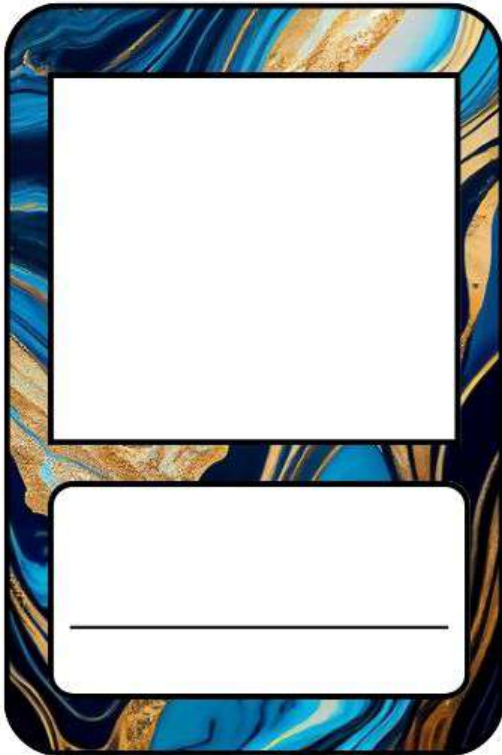
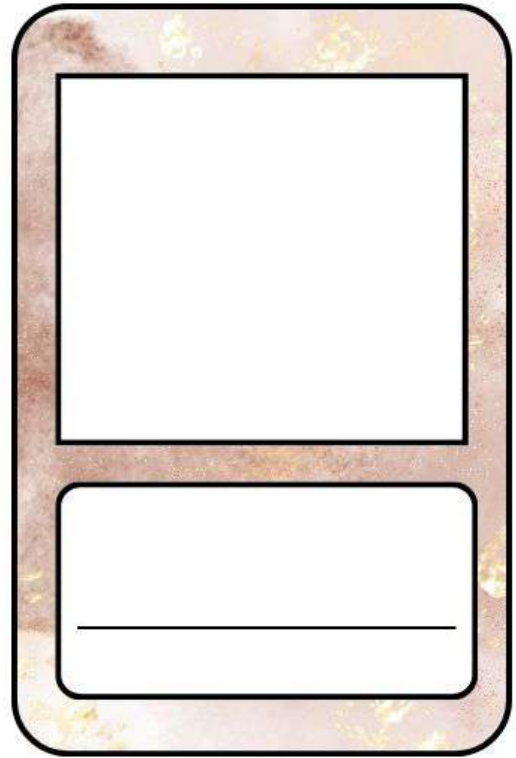
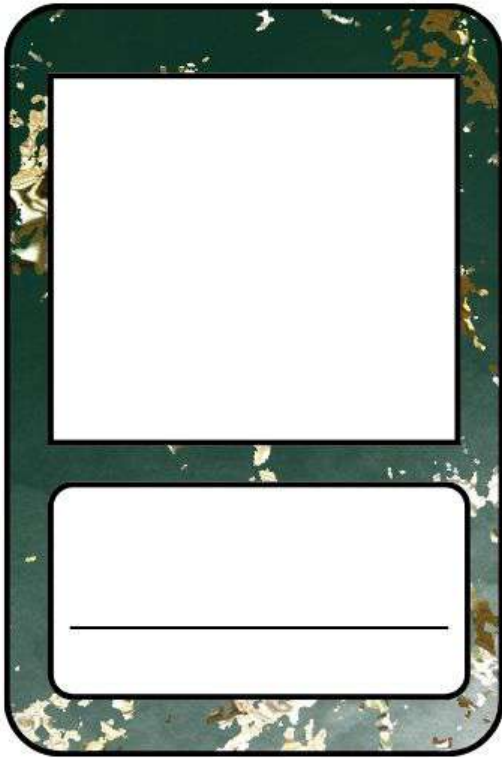
Trading Card Templates



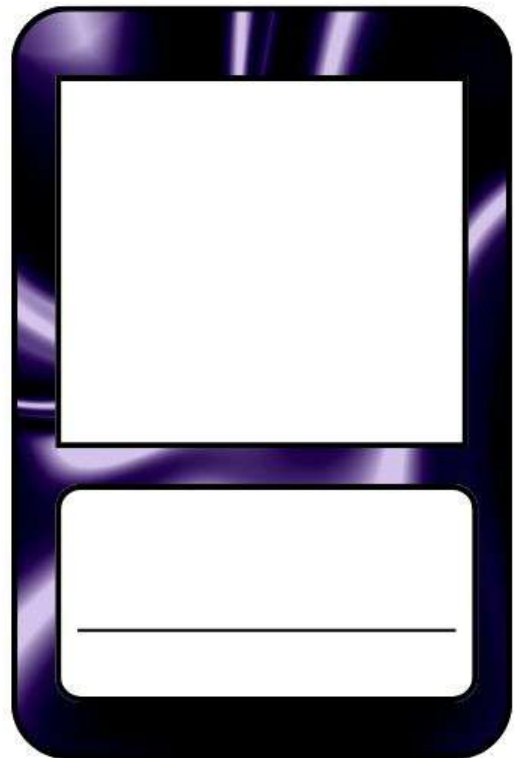
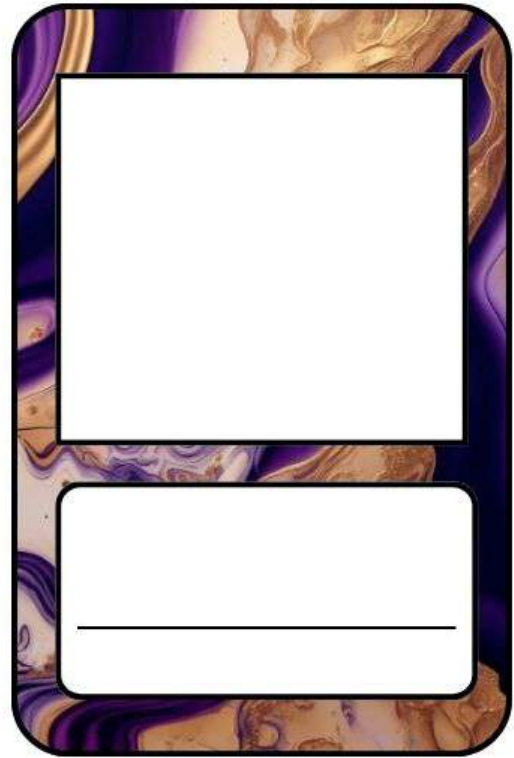
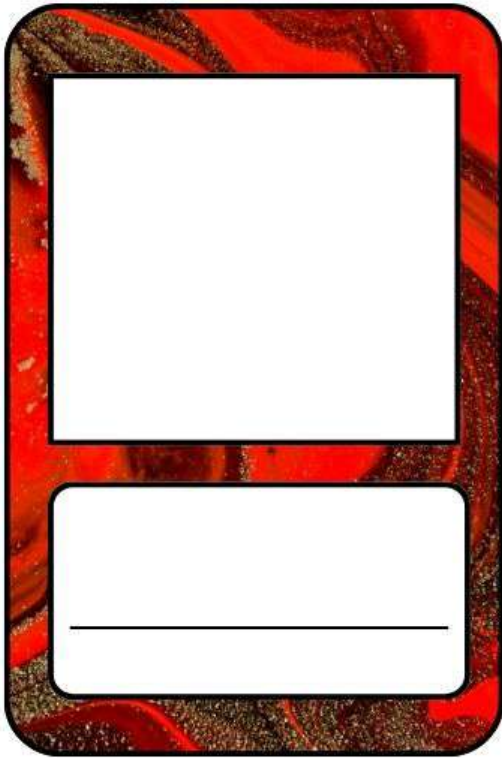
Trading Card Templates



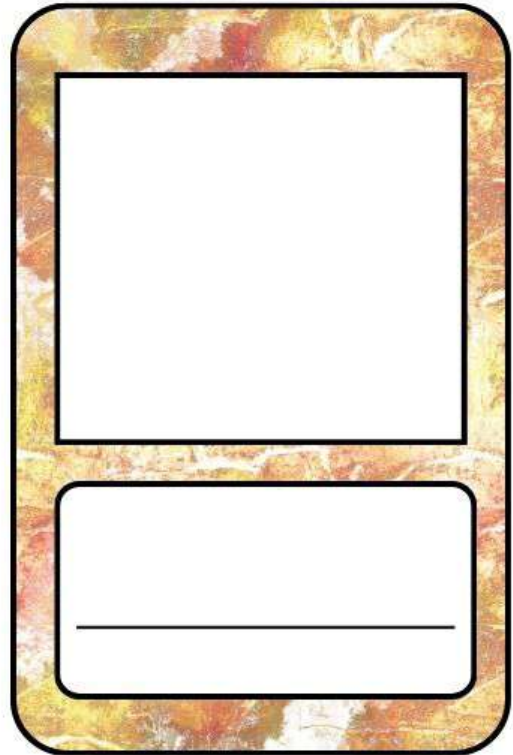
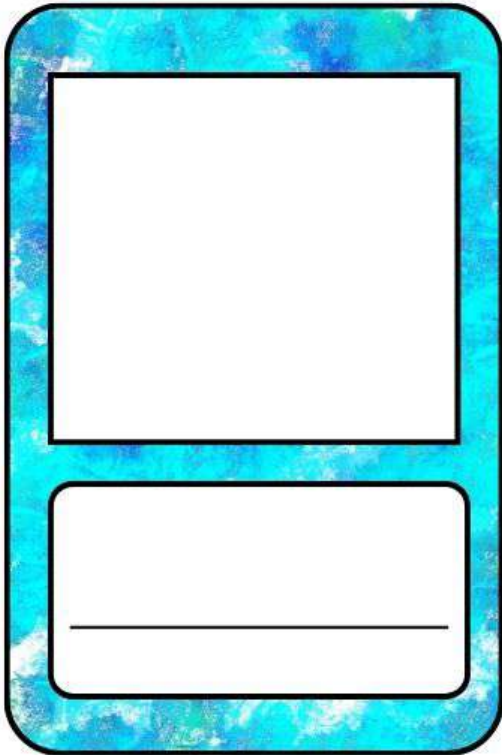
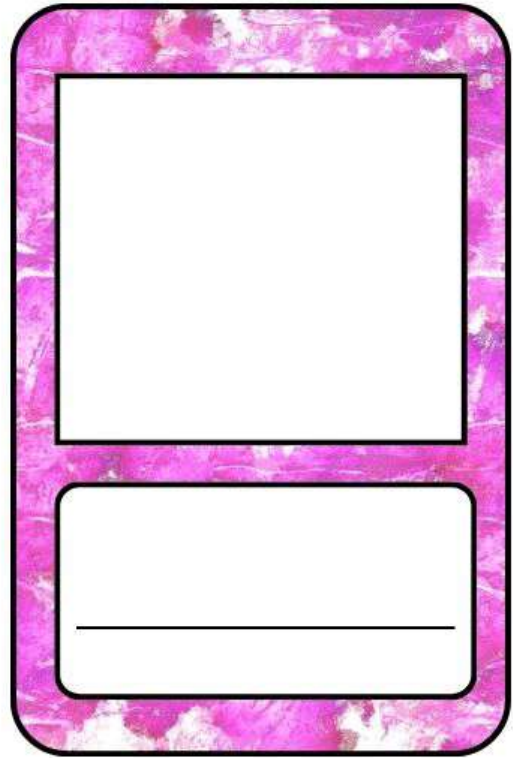
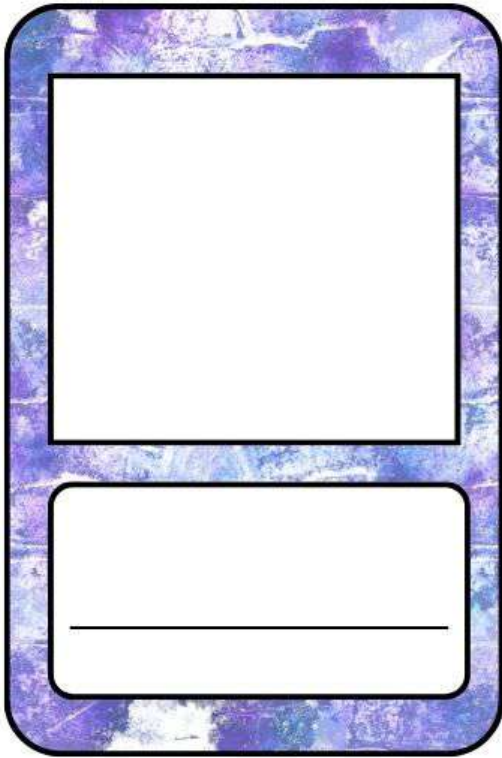
Trading Card Templates



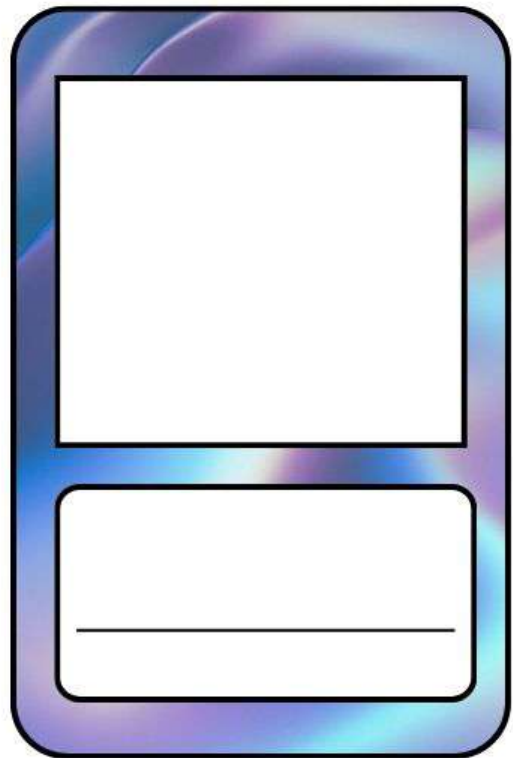
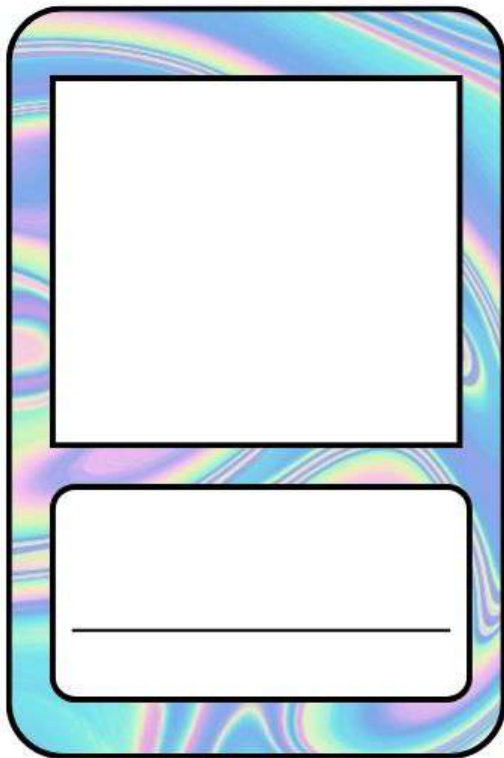
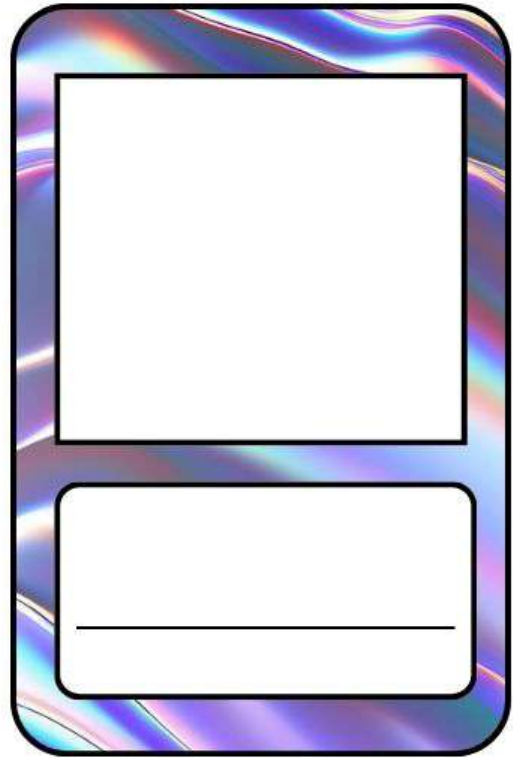
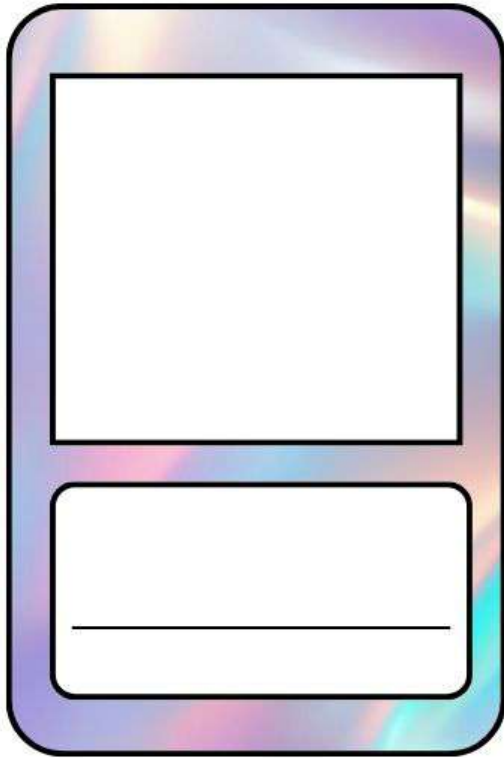
Trading Card Templates



Trading Card Templates



Trading Card Templates



Trading Card Templates

